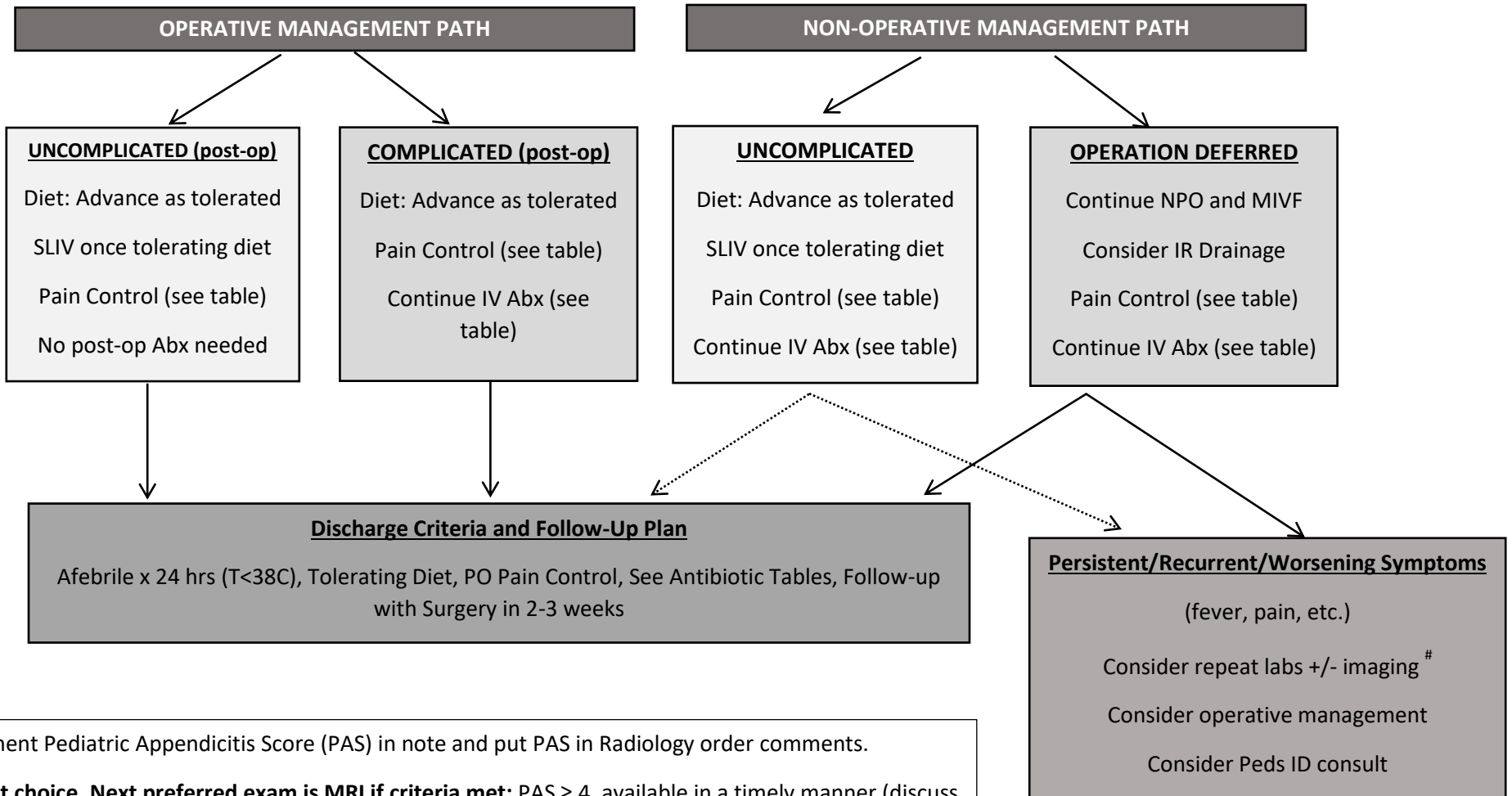


Created by	Department	Creation Date	Version Date
R. Patel, S. Patel, E. Keller	Pediatric Surgery, Radiology, ID, EM, PHM, PACT and Pharmacy	11/2015	5/2022



* Document Pediatric Appendicitis Score (PAS) in note and put PAS in Radiology order comments.

† **US first choice. Next preferred exam is MRI if criteria met:** PAS ≥ 4, available in a timely manner (discuss with Radiology via PerfectServe), and patient developmentally appropriate not to require sedation. If BMI>30, consider using **MRI** as first choice. In pediatric patients CT should be used judiciously and reserved for cases when **MRI** criteria are not met and/or alternative diagnosis is suspected.

Postoperative/repeat imaging may not be clinically useful to evaluate for abscess until ~5-7 days post-op.

Created by	Department	Creation Date	Version Date
R. Patel, S. Patel, E. Keller	Pediatric Surgery, Radiology, ID, EM, PHM, PACT and Pharmacy	11/2015	5/2022

Antibiotic Selection and Duration			
Appendicitis Classification	Inpatient	Outpatient, if needed	Duration
Uncomplicated	Ceftriaxone plus metronidazole	N/A	Peri-operative only
Complicated		Amoxicillin-clavulanate OR Cephalexin plus metronidazole	5 days or hospital discharge, whichever is longer
Non-operative		Cephalexin plus metronidazole	
Severe beta-lactam allergy	Ciprofloxacin plus metronidazole	Ciprofloxacin plus metronidazole	5 days or hospital discharge, whichever is longer

Intravenous (IV) Antibiotic Dosing			
Antibiotic	Weight-based dose (mg/kg/dose)	Max dose (mg)	Interval (hr)
Ceftriaxone	50	2000	Q24
Metronidazole	30	1500	Q24
Ciprofloxacin	10	400	Q12

Oral (PO) Antibiotic Dosing			
Antibiotic	Weight-based dose (mg/kg/dose)	Max dose (mg)	Interval (hr)
Amoxicillin-clavulanate ¹	25	875 (tablets) 900 (suspension)	Q12
Cephalexin	25	1,000	Q8
Metronidazole	10	500	Q8
Ciprofloxacin	10	500	Q12
¹ Use 600mg-42.9mg/5mL suspension or 875mg-125mg tablet			

Pain Medication Selection and Dosing		
	Pre-Op	Post-Op
Acetaminophen	15mg/kg/dose PO Q6 scheduled (max 75 mg/kg/day or 4 gm)	15mg/kg/dose PO Q6 scheduled (max 75 mg/kg/day or 4 gm)
NSAIDs	Try to avoid	<ul style="list-style-type: none"> - Per surgeon discretion - If able to take PO: ibuprofen 10mg/kg/dose PO Q6 scheduled (max dose 600 mg/dose PO q6) rotated with acetaminophen - If NPO: ketorolac 0.5 mg/kg/dose IV Q6 scheduled (max initial dose 15 mg)
Opioids	<ul style="list-style-type: none"> - If able to take PO: hydrocodone-acetaminophen 0.1 mg/kg/dose PO Q4 PRN (max starting dose of 5 mg) - If NPO: morphine 0.05 mg/kg/dose Q4 hours PRN (max starting dose 2 mg) or hydromorphone 0.01 mg/kg/dose IV Q4 PRN (max starting dose 0.2 mg) 	<ul style="list-style-type: none"> - If able to take PO: hydrocodone-acetaminophen 0.1 mg/kg/dose Q4 PRN (max starting dose of 5 mg) - If NPO: morphine 0.05 mg/kg/dose Q4 hours PRN (max starting dose 2 mg) or hydromorphone 0.01 mg/kg/dose IV Q4 PRN (max starting dose 0.2 mg)

Created by	Department	Creation Date	Version Date
R. Patel, S. Patel, E. Keller	Pediatric Surgery, Radiology, ID, EM, PHM, PACT and Pharmacy	11/2015	5/2022